

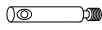
Assembly instruction 07/2017

Tools:

Allen screw SW 5 (enclosed)

Mechanical fasteners:

XS bolts



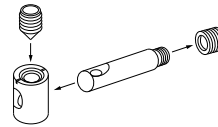
boxes



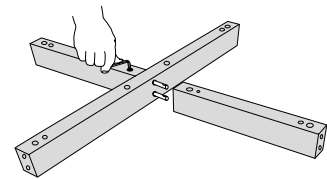
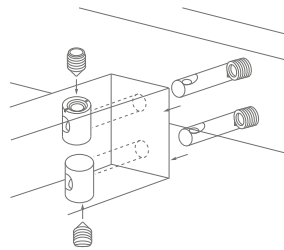
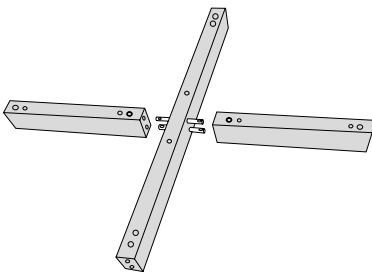
grub screws



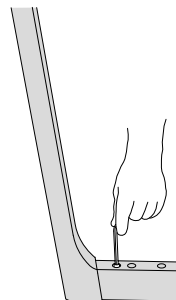
threaded screw



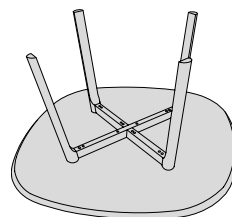
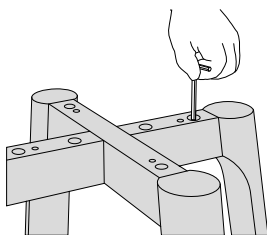
Funktionsvideo:
<https://www.youtube.com/watch?v=ioiUTDqtvgE>



1. Mount the frame cross: Fix XS bolts, position the boxes and put together the components and fix them with the grub screws.

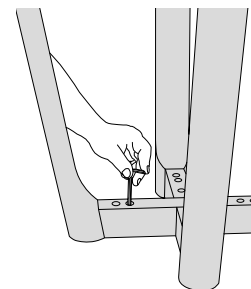


2. Mount one tableleg after another with the frame crosses the same way. The easiest way to do this is to place the tableframe the other way around. Fix all grub screws from below.



3. Turn the tableframe back the right way and fix all grub screws from above.

4. Position the tableframe on the tabletop...



4.and fix it with the threaded screws.